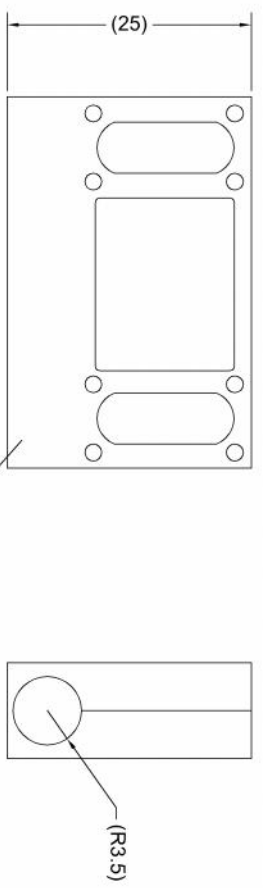
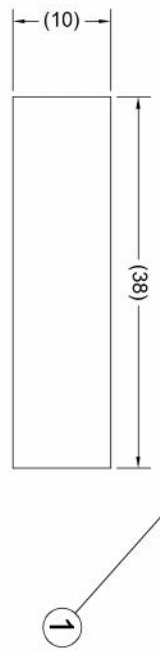


Revision Notes.			
R1 -	Drawn:-	Checked:-	Approved:-
AP A:-	Date:-	Date:-	Date:-

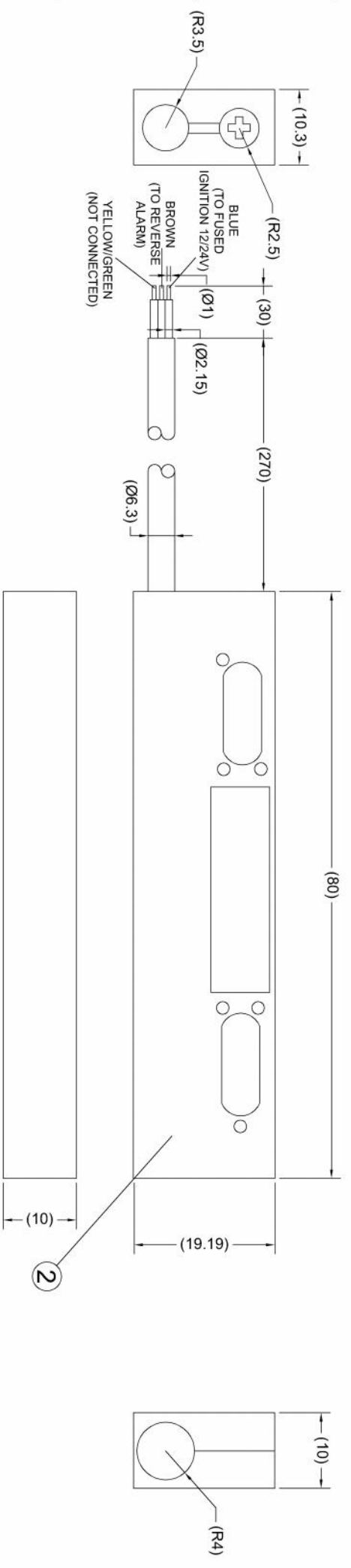


ITEM	PART NO	QTY	DESCRIPTION
①	N/A	1	PS-003 MAGNET
②	N/A	1	PS-003 REED SWITCH
③	N/A	1	INSTRUCTION GUIDE (NOT SHOWN)



OPERATION:

1. WHEN THE MAGNET AND THE REED SWITCH ARE WITHIN APPROX 12.5mm OF EACH OTHER, BLUE AND BROWN WIRES WILL BE CONNECTED.
2. WHEN THE MAGNET AND THE REED SWITCH ARE MORE THAN APPROX 12.5mm OF EACH OTHER, BLUE AND BROWN WIRES WILL BECOME OPEN CIRCUIT.



- NOTES:**
1. SUPPLIED IN A PRESS SEAL PLASTIC BAG
 2. THIS DRAWING IS CREATED AS A REFERENCE DRAWING AND AS SUCH MAY NOT ACCURATELY REFLECT THE PRODUCT.
 3. REFER TO INSTRUCTION GUIDE FOR INSTALLATION.
 4. MAXIMUM CURRENT CAPACITY IS 3 AMPS.

PROPRIETARY NOTICE
 THIS DESIGN AND TECHNICAL INFORMATION APPEARING ON THIS DRAWING IS THE PROPERTY OF BRIGADE ELECTRONICS, AND IS DISCLOSED IN CONFIDENCE. IT IS NOT TO BE COPIED, REPRODUCED, REVEALED TO OR APPROPRIATED BY OTHERS, EITHER IN WHOLE OR IN PART WITHOUT THE EXPRESS WRITTEN CONSENT OF BRIGADE ELECTRONICS.



Assembly PI Approval	Approved by	Checked by	Drawn by
-	G.P.LITH	A.FEDERIGHI	R.BATES
Angle of Projection	Units	Scale	Released
Third Angle	mm	N/A	20/10/14
Status	Part No	Assembly Ref	
RELEASED	#0050	PS-003	
		BE-003010-00-14	